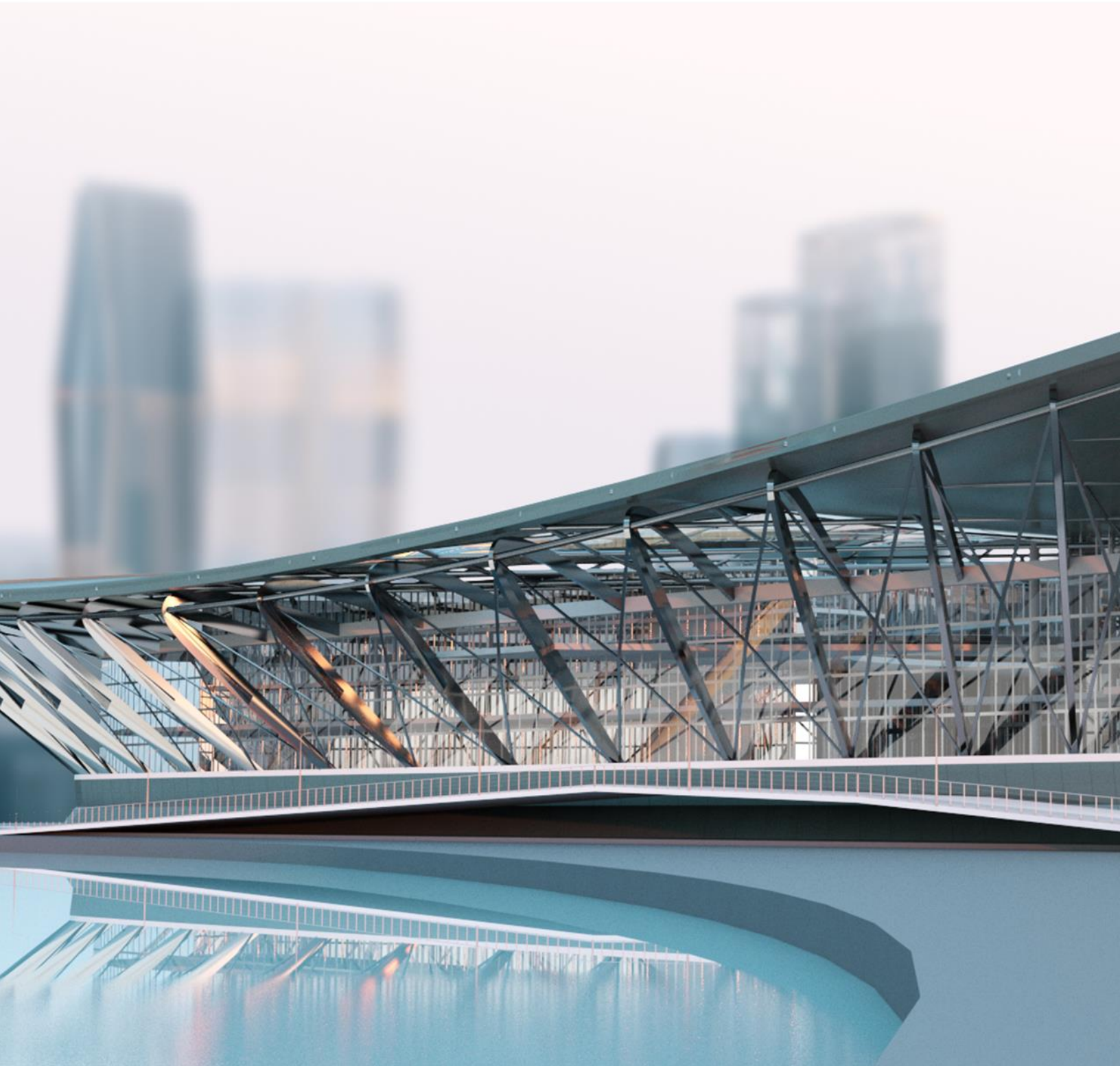


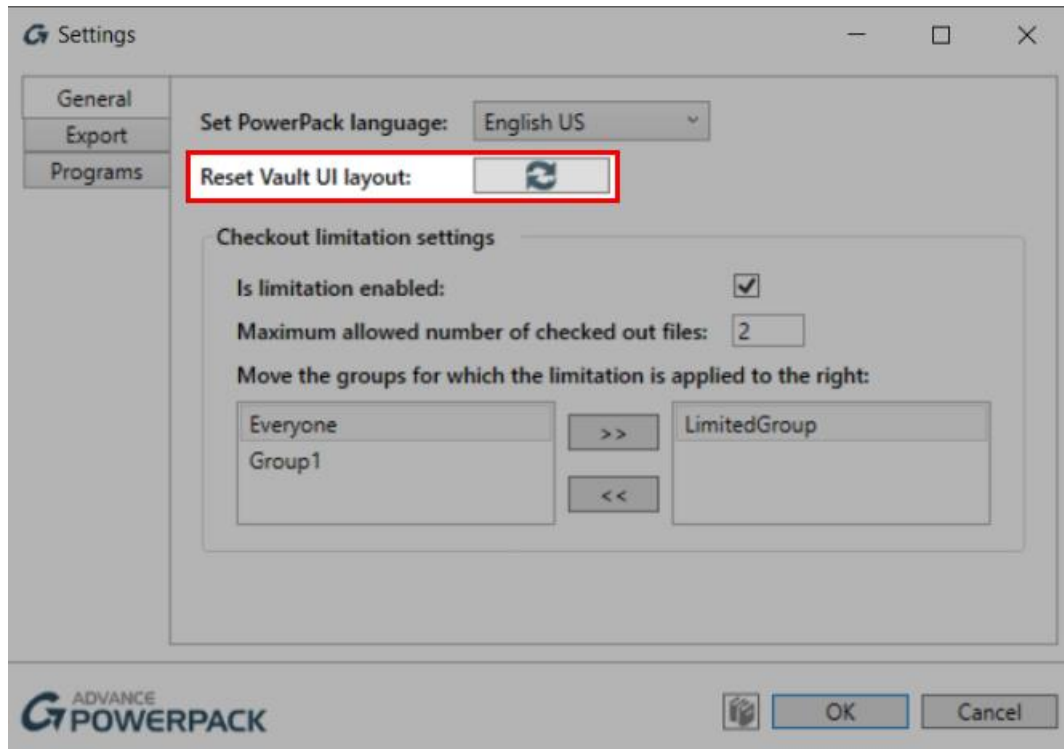
ADVANCE
POWERPACK
for Autodesk® Vault
2022.1

What's New



New Features:

- Added the *Reset Vault UI layout* command in the *General* section of the *PowerPack settings*.

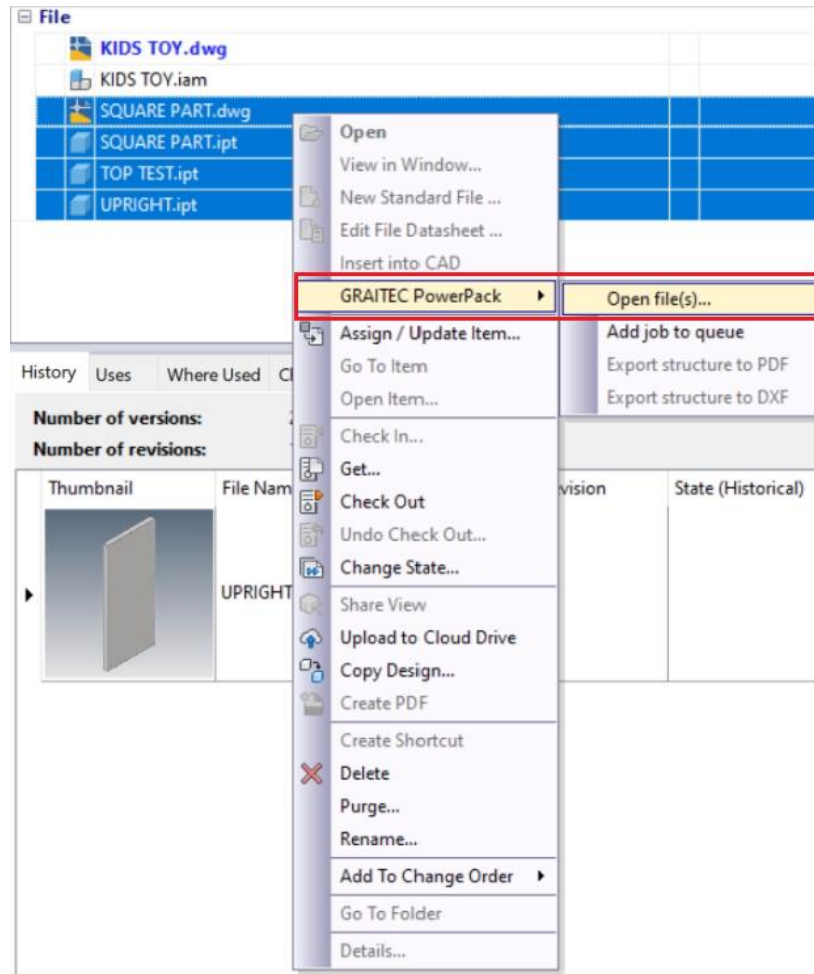


The Reset Vault UI layout command

This command is useful for cases when a second monitor is no longer available and the dialog locations were saved outside of the current workspace.

Improvements & bug fixes:

- The *Open file* command can now be used to open multiple files at once



The Open file command

- *DWG2PDF* job now supports AutoCAD DWG files.

Note: To be able to export AutoCAD DWG files, Autodesk DWG TrueView must be installed on the Job Processor machine.