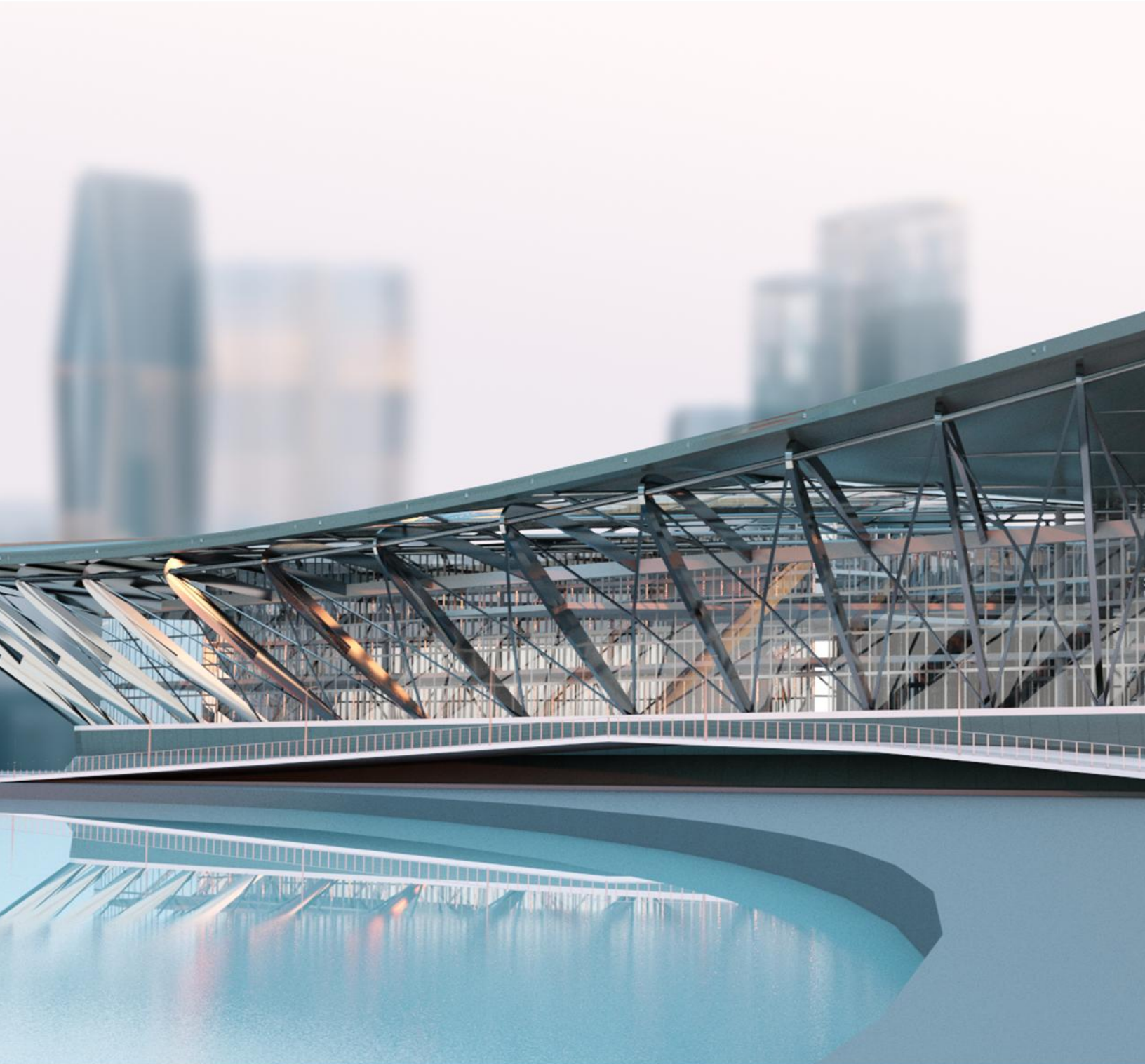


**G** ADVANCE  
**POWERPACK**  
for Autodesk® Vault  
2022

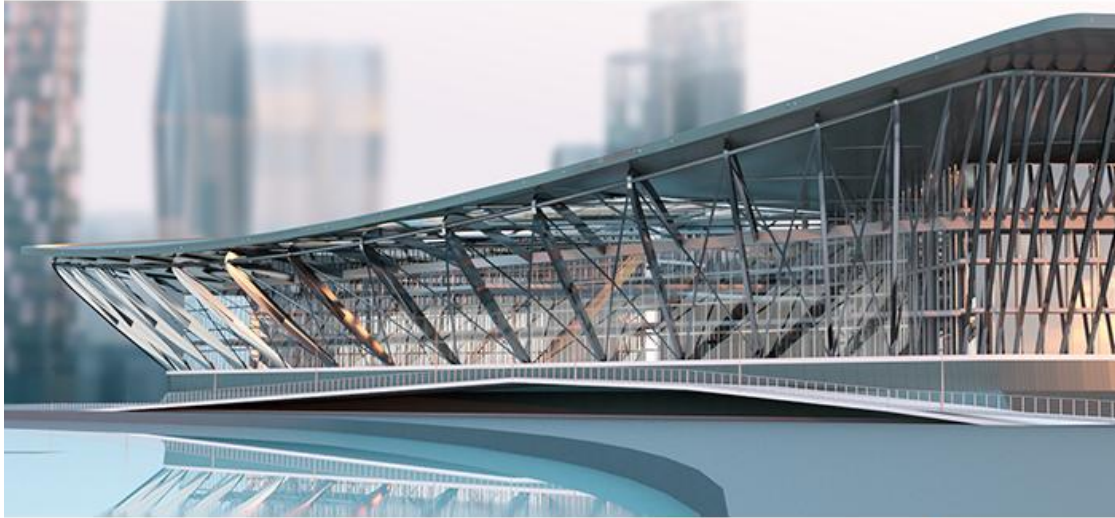
# What's New



**Welcome to GRAITEC Advance POWERPACK Autodesk® Vault® 2022**

GRAITEC is very pleased to present the latest version of Advance PowerPack for Autodesk® Vault® 2022, part of the Graitec Advance Suite.

This document contains the description of new options and improvements on PowerPack for Autodesk® Vault® 2022.



## Improvements & bug fixes

- Fixed an issue with the *ExportAddVault* plugin when the destination folder is missing or empty;
- Fixed an issue where the file added with the *ExportAddVault* plugin would not have the correct *ClassificationType*, which prevented the user from moving the file in another folder on the Vault Server;
- Fixed an issue when the *exportTxtPath* element was missing from the *ConvertJobsOptions.xml* file;
- Added the option to export multi sheet drawing to .ZIP rather than having separate files in the export location. The following adjustments must be made in order to achieve this:
  - Modify the *USE TRANSMITTAL=No* to *USE TRANSMITTAL=Yes* in the file:  
*c:\ProgramData\Autodesk\ApplicationPlugins\Graitec.VPP.bundle\Contents\2022\Config\exportdxs.ini*
  - Modify the desired template with *ext=".ZIP"* and *multipagemultidoc="false"* in the file:  
*c:\ProgramData\Autodesk\ApplicationPlugins\Graitec.VPP.bundle\Contents\2021\Config\2021\Inventor\Convert.xml*

(e.g. `<template name="DWG2DXF" translator="DXF" ext=".ZIP" realex=".DXF" multipagemultidoc="false">`)