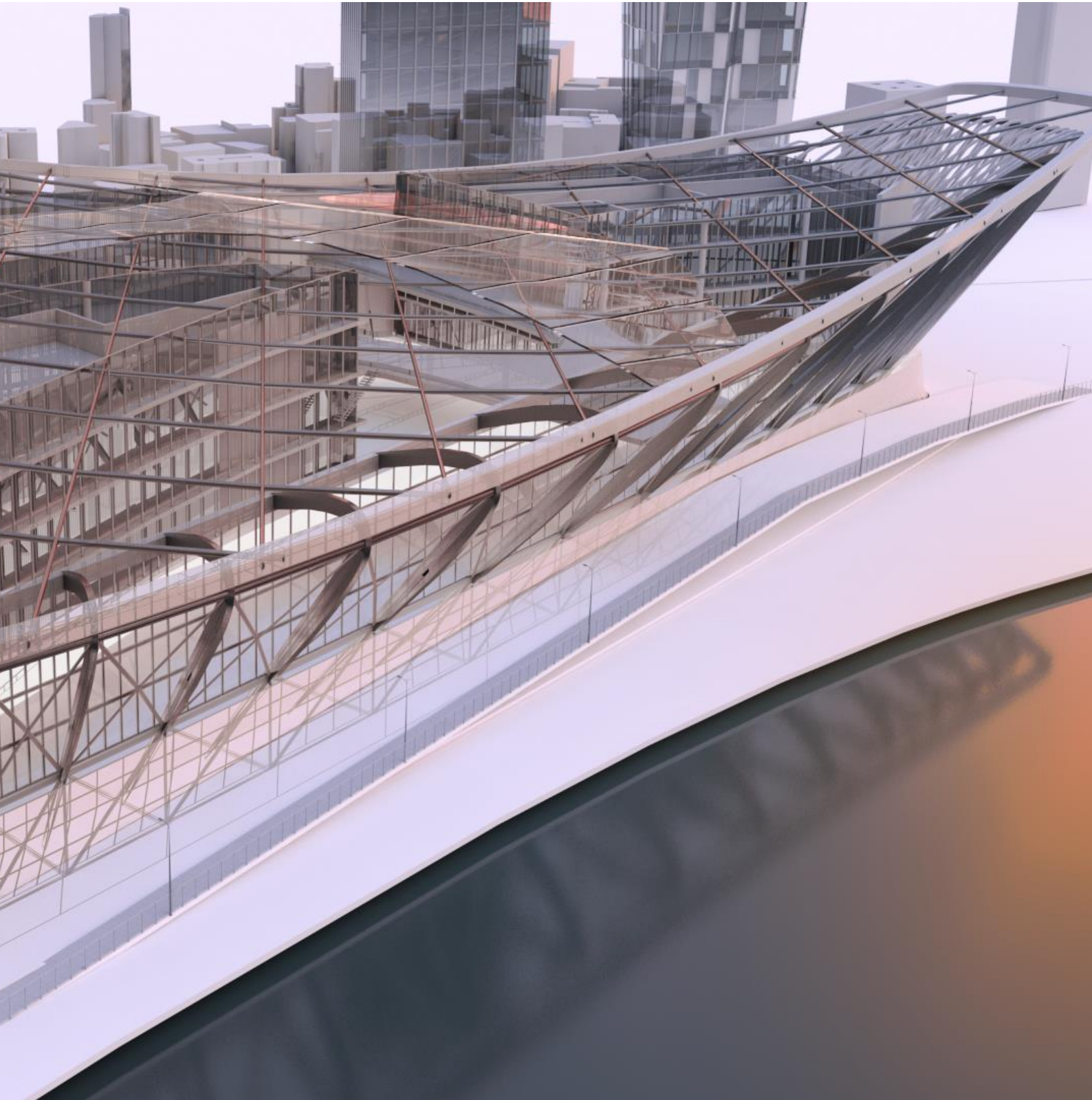


# What's New



## **Improvements and corrections**

The **Hotfix 1 to Advance Design 2022.2** includes the following corrections:

### **Export data to RC Beam module**

- **Fix:** Correction of an issue which occurred during export from the FEM model to RC Beam of data for multi-span concrete beams modeled as super-element. In case the x-axis of the local system of the beam was positioned in the model in the opposite direction than the axis of the global system, the orientation of the geometry with respect to the transferred internal forces was reversed. [AD #127047; Support #126475]