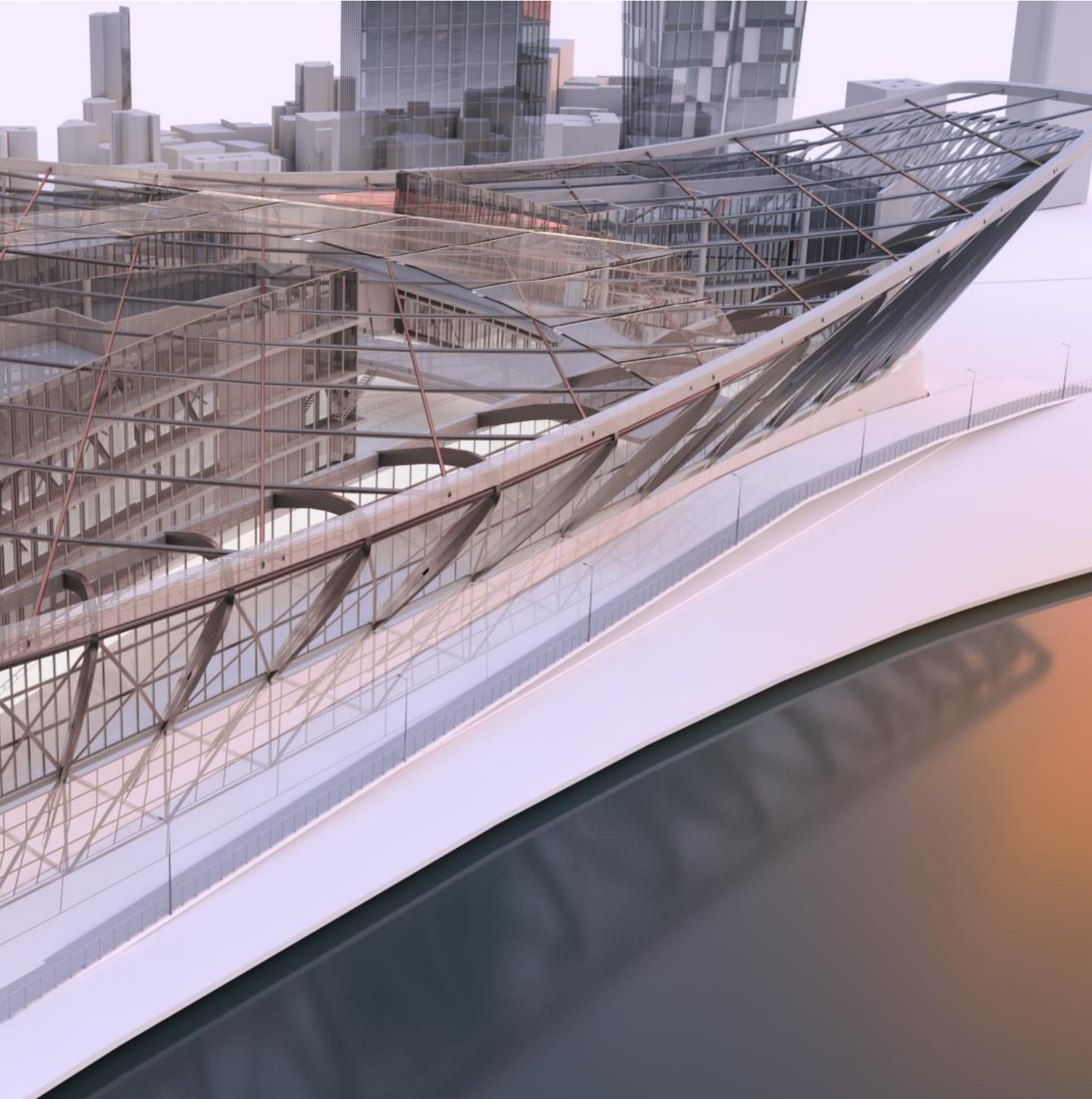


# What's New



## **Improvements and corrections**

The **Hotfix 2 to Advance Design 2022.2** includes the following corrections:

### **Export data to RC Footing module**

- **Fix:** Correction of an issue which occurred when transferring geometric data from Advance Design to the RC Footing module whereby a rectangular column cross section was always rotated in the same direction which could result in incorrectly rotated columns on drawings. [AD #128491; Support #128377]